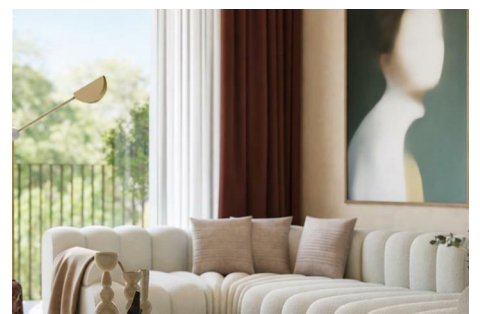


Mulburries



1 Bonnet St , London, E16 2AL

Riverscape offers an exceptional riverside lifestyle in one of East London's most exciting and well-connected neighbourhoods. Set between the River Thames and the green open spaces of Lyle Park, the development combines tranquil surroundings with outstanding connectivity, including the Elizabeth Line at Custom House and the DLR just moments away.

Residents benefit from beautifully designed apartments with expansive windows and private balconies, many enjoying river or park views. Exclusive amenities include a stunning Sky Lounge with panoramic views and full access to the Royal Wharf Clubhouse, featuring a 25-metre swimming pool, spa, gym and fitness studios. With cafés, shops, restaurants, a school and riverside walks all on the doorstep, Riverscape delivers a rare balance of nature, lifestyle and fast access to Canary Wharf, the City and the West End—ideal for owner-occupiers and investors alike.

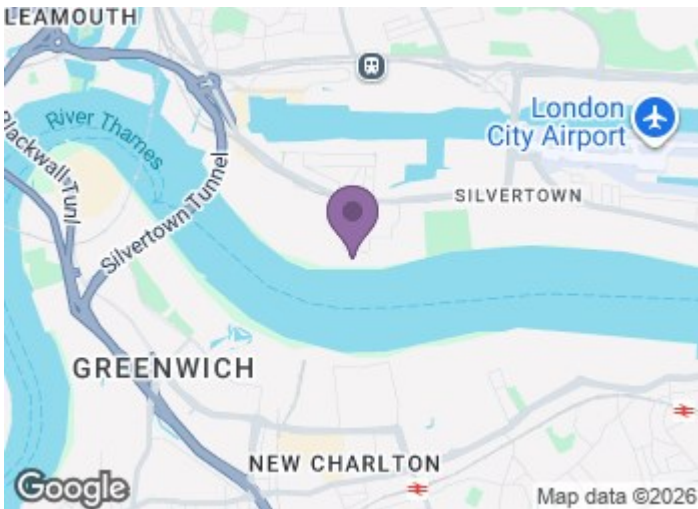
£590,000

1 Bonnet St

, London, E16 2AL



- 10-minute walk to Custom House (Elizabeth Line)
- Heathrow Airport in 44 minutes
- 24 hour concierge
- 2 minutes to West Silvertown DLR
- Riverside living with uninterrupted views
- Liverpool Street in 10 minutes
- 25m swimming pool/spa/gym/sky lounge



[Directions](#)



Floor Plan

These particulars, whilst believed to be accurate are set out as a general outline only for guidance and do not constitute any part of an offer or contract. Intending purchasers should not rely on them as statements of representation of fact, but must satisfy themselves by inspection or otherwise as to their accuracy. No person in this firm's employment has the authority to make or give any representation or warranty in respect of the property.

